

[www.biennalephotoliege.be](http://www.biennalephotoliege.be)

The 6th International Biennial of Photography and Visual Arts of Liège is an organisation of the Centre culturel de Liège - Les Chiroux and the City of Liège.  
infos : +32(0)4.22319.60 / [biennale@chiroux.be](mailto:biennale@chiroux.be) /

16.02 → 30.03.2008

# TERRITOIRES

6th International Biennial of Photography and Visual Arts, Liège

Musée d'Art moderne et d'Art contemporain + Cabinet des Estampes | Salle Saint-Georges du Musée d'Art wallon | Ancienne Eglise Saint-Antoine | Ancienne Eglise Saint-André

The exhibitions will be accessible from February 17th to March 30th 2008  
From Tuesday to Saturday from 1p.m. to 6p.m. and Sunday from 10a.m. to 4.30 p.m.

Photography : Anouk KRUIHOF, no title, 2007



Edward Burzynsky, Courtesy of Galerie Stefan Röpke, Köln

16.02 → 30.03.2008

# TERRITOIRES

[ TERRITORIES ]  
6th International Biennial  
of Photography and  
Visual Arts, Liège

**From February 16th to March 30th, 2008, the 6th edition of the International Biennial of Photography and Visual Arts of Liège will take place.**

The concept of *Territories* is the centre of the 6th International Biennial of Photography and Visual Arts, Liège. This multifaceted theme implies important contemporary issues and has been chosen in its broadest meaning, in order to point out different aspects like “Mental Territory”, “Political Territory”, “Mutating Territory” or the relationship between “Territory and Identities”. In the context of this year’s Biennial four main exhibitions will focus on these different facets and will present the work of numerous internationally recognised artists. The International Biennial of Photography and Visual Arts remains true to its tradition of encouragement of creation, and has once again supported young talents of the French Community in Belgium. Remarkable is also the presence of a selection of emerging photographers and an important interactive work, whose original views and approaches deserve to be discovered.

Several exhibition spaces in Liège are dedicated to the exhibitions of the Biennial. The Musée d’Art moderne et d’Art contemporain/Cabinet des Estampes (Mamac) will be entirely

occupied by the Biennial. In the centre of the city, a very large panel of artists and photographers will be shown in the Salle St-Georges of the Musée d’Art wallon and the ancient Churches of Saint-Antoine and Saint-André. Portugal is the honorary guest country of this 6th edition. On this occasion, Rui Prata, curator at the Museu da Imagem in Braga and organizer of the Festival *Encontros da Imagem*, has been invited to conceive a special exhibition. Rui Prata’s show offers the public in Liège to discover a historic panorama of Portuguese photography and presents a selection of contemporary Portuguese photographers. In parallel to the Biennial, various cultural places in Liège will offer alternative exhibitions about the same topic. The period of the Biennial will be accompanied by an educational program. A catalogue will be edited for the occasion.

# Practical Information :

The 6th International Biennial of Photography and Visual Arts of Liège is an organisation of the Centre culturel de Liège - Les Chiroux and the City of Liège.

## Opening hours :

The exhibitions will be accessible from February 17th to March 30th 2008  
From Tuesday to Saturday from 1p.m. to 6p.m. and Sunday from 10a.m. to 4.30 p.m.

## Opening :

Round-trip by bus through the exhibitions on Saturday, February 16th, starting at 1 p.m.  
(Limited number of seats - on reservation only)  
Official Opening at the Mamac at 6 p.m.

## Prices :

Pass of the Biennial (access to the four exhibition places): 10€ (full price); 6€ (students, seniors, unemployed); 1,25€ (art.27)

Entry per exhibition place: 3,8€ (full price), 2,5€ (students, seniors, work-seekers)  
Children (-12 years) : free

Special prices for groups of 15 people minimum (on request)

## Educational program for schools :

Educational programs are available on request

Guided tours will be organised by the guides from asbl Art&Fact. Groups of maximum 20 persons.  
Prices: 60€ (from Monday to Friday, guided tour in French), 65€ (Saturday, Sunday and holidays and/or guided tours in Dutch, German or English).  
Reservations and information directly at asbl Art&Fact:  
Tel. : +32(0)4.366.56.04 - Fax : +32(0)4.366.58.54 - email : art-et-fact@misc.ulg.ac.be

## Informations :

Centre culturel de Liège - Les Chiroux  
8, place des Carmes  
B-4000 Liège  
Tel : +32(0)4.223.19.60  
www.biennalephotoliege.be  
Email : biennale@chiroux.be

Contact point, reception of the visitors, sale of tickets, coffee bar, sale of catalogues and publications: Rotunda of the Mamac (during the opening hours of the exhibition)

Tickets can be purchased at the entry of each exhibition.

## Press Contacts :

CARACAS public relations hvdw@caracascom.com  
15, rue Fassin - 4020 liège - t/f +32(0)4.349.14.41  
24, Oude Kerkstraat - 2018 Antwerpen - t/f +32(0)3.237.93.89

# [A] The Exhibitions

## #1a Mutating Territory

Salle Saint-Georges du Musée d'Art wallon  
En Feronstrée, 86 / B-4000 Liège

It is evident that man appropriates a territory and shapes it according to his requirements. He marks it with his traces, his sign or *imprint* – terms with which we describe today the macro effects of our daily decisions and ways of life. Whether by architectural interventions, by digging of natural resources, or by colossal construction sites – when man settles down in an environment, it is affected by him. New landscapes appear, shaped by more or less adjusted perspectives of territorial strategy. The exhibition *Mutating Territory* would like to present an overview on these visible mutations as they are perceived by contemporary photography. Looking at these numerous witnesses of the new views on how humans occupy territory and live and work in it, the question arises: Human intervention certainly modifies the territory deeply. But doesn't this new territory in turn also shape a new humanity?



Nicolas Bomal



Patrick Messina, courtesy of Label Expositions



Joël Tettamanti

### With the works of :

Patricia Almeida (Pt), Nicolas Bomal (B), Edward Burtynsky (Ca), Antonio Catarino (Pt), Paulo Catrica (Pt), André Cepeda (Pt), Xavier Delory (B), Jean Janssis (B), Patrick Messina (F), Joël Tettamanti (CH), Territoires de Fictions (F) + Workshop of the 5th year classes from Institut supérieur d'Architecture Saint-Luc de Wallonie - Liège

+ Urban installations (proposal by Photo Gallery asbl)

# #1b O Estado do Tempo

[The State  
of Time]

Salle Saint-Georges du Musée d'Art wallon  
En Feronstrée, 86 / B-4000 Liège

Portugal being the honorary guest country of the Biennial, a special place has been reserved this year for Portuguese photography. The exhibition conceived by Rui Prata, curator at the *Museu da Imagem* in Braga and organiser of the festival *Encontros da Imagem*, is intitled *O Estado do Tempo* ("The State of Time") and presents with 248 pictures in four chapters one century of Portuguese History.

Since its first edition in 1986, the festival *Encontros da Imagem* aims the diffusion of the work of young generations of Portuguese photographers. In the context of these "Encounters of the Image", the city of Braga has, also since the first edition of the festival, shown numerous internationally recognised photographers. In 1999, the city founded the *Museu da Imagem* in order to intensify the work of the festival *Encontros da Imagem* and to preserve the most important photographic collection of Braga from the destruction. This patrimonial institution is in the possession of more than 30.000 negatives. It also pursues precious research and program work, which leads to the realisation of about ten exhibitions yearly.

The exhibition *O Estado do Tempo*, conceived by Rui Prata for the Liège Biennial, is the result of a remarkable selection of the archives of the most important newspapers and several private collections.

*O Estado do Tempo* consciously stays away from the illustration of the big events and from the institutional representation of the political overthrows that the country has undergone. In the contrary, the exhibition wants to represent the history of mentalities and customs through the image and to reveal the micro sociology of gestures, acts and unconscious rituals of people. Between testimonies and creations, between history and stories, *O Estado do Tempo* suggests us a journey through collective feelings, values and affections as they are captured by photography.

Rui Prata also presents in the Salle Saint-Georges of the Musée d'Art wallon a selection of six contemporary Portuguese photographers, who represent the current artistic creation in Portugal.



## #2 Mental Territory

Musée d'Art moderne et d'Art contemporain (Mamac)  
Cabinet des Estampes  
Parc de la Boverie, 3  
B-4020 Liège

How to approach the intimacy of an individual person? His fantasy? His humanity? His craziness? How to render this secret space which constitutes us and which guides us in the relationship to ourselves and to others? How can we visualize the interior territory that reflects our decisions, love attachments and meanders?

"In default of seeing clearly, we want at least see clearly the obscurities", said Sigmund Freud. This exhibition is the largest one of the Biennial, as it will occupy the entire space of the Musée d'Art moderne et d'Art contemporain/Cabinet des Estampes de Liège (Mamac). *Mental Territory* tempts to illuminate the endless richness of this irresolvable enigma. The presented artists have chosen to lift a part of the veil laying on the intimacy of their partnership, family or loneliness without any compromise or any taboo. Classifications of the good and the bad, the normal and the abnormal are left aside in this exhibition. What is left are confessions, murmurs, difficulties of being, bodies without answer, dreams and masks that are falling only to reveal other aspects. The spectator is invited by this exhibition to explore his own mental territory, to confront himself with what is similar to him, to what seems crazy, sick or strange or like his own image. He must face his own portrait.



Anouk Kruithof



Marrie Bot

### With the works of :

David Adika (Israël), Cathy Alvarez (B), **Marrie Bot** (NL), **Elinor Carucci** (Israël), Jorge Rojas Castro (B/Chili), **Donigan Cumming** (CA), Sibylle Fendt (D), Karel Fonteyne (B), Patricia Kaiser (B), Anouk Kruithof & Jaap Scheeren (NL), **Thierry Kuntzel** (F), Sophie Langohr (B), **Mireille Loup** (F), Christine Mawet (B), Paula Muhr (Serbie/D), Benjamin Nickel (B), **Mathias Nouel** (F/B), Marielle Nylander (Suède), Luiz Palma (Pt), Jean-François Pirson (B), Laurie Polson (B), Bruno Santos (Pt), **Sandy Skoglund** (Sweden), **Alec Soth** (USA), Territoires de Fictions (F).

# #3 Political Territory

Ancienne Eglise Saint-Antoine  
Rue Moray, s/n  
B-4000 Liège

Since the beginning of time, wars and fights have marked the history of the nations. The conflicts we know today, whether they rely on economical, ideological or religious issues, leave stigmas on the landscapes and in the hearts of people. Some of the artists presented in this exhibition show a particular attraction towards the place of the borderline. Whether seen as a real or symbolic delimitation, scorned or guarded to the teeth, the frontier is an unavoidable element of definition of the political territory.

Other photographers have chosen to reflect on the human and social consequences which come along with these geopolitical challenges. Migrants, deracinated or displaced persons – all those who move elsewhere following their own will or obligation seem to recompose another community, a dispersive group in continuous reconstruction of its identity.

In the two cases the Political Territory seems to be - like a puzzle seeking for permanent completeness - in the process of incessant reconstruction.



Yann Mingard & Alban Kakulya



Jérôme Brézillon, courtesy of Label Expositions

## With the works of :

Anthony Berthaud (B), **Jérôme Brézillon** (F), Dojo Cinéma (F), Wilfrid Estève & Virginie Terrasse (F), Brigitte Grignet (B), **Rip Hopkins** (GB), Adeline Keil (F), **Yann Mingard & Alban Kakulya** (CH), Liza Nguyen (F), **Frédéric Sautereau** (F), Territoires de Fictions (F), **Laetitia Tura** (F).

# #4 Territory and Identities

Ancienne Eglise Saint-André  
Place du Marché, 27  
4000 Liège

## The project

Territory and Identities is a project of social, cultural and artistic dimension. Different publics have been confronted with the artistic creation on the basis of questions which were both simple and complex: What is “my” territory? The world, my neighbourhood, my city or my house? How are my points of orientation connected to my identity as a citizen, as a man or a woman, as a young or an elder person? The participants have been accompanied in their production of texts, images and sound by artists and experienced professionals – results which are presented in the ancient Church of Saint-André and its surroundings.

Especially by working with the technique of the pinhole camera, photography has taken a special place in this process. This rudimentary photographic camera has been employed to deal with current questions and to accord the word to people who usually do not raise their voice. A selection of images realised with this technique will be presented to the public, especially by the construction of a huge fresco composed of thousands of photographic prints created in the workshops. The fresco will be realised by Miguel Chikaoka, Brazilian photographer and founder of the collective Foto Ativa.

Traces of this work will also be presented on other supports (“sound cabinets”, “small multimedia works POM” and publications).

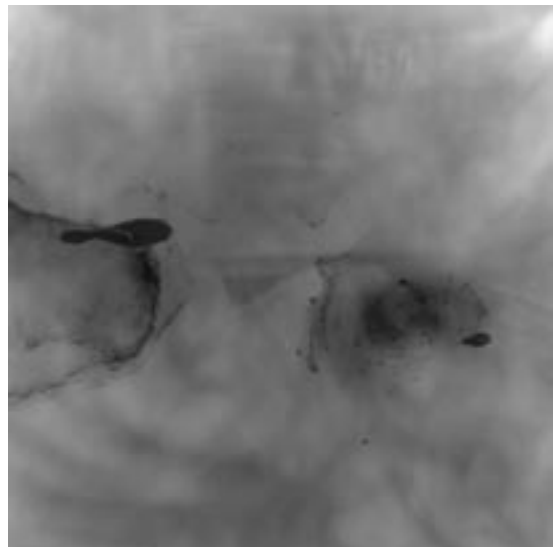
The exhibition Territory and Identities is the result of a remarkable program which has been accomplished during several months and which has mobilised an important number of associations. This process involving the public will be continued in the future.

The exhibition Territory and Identities is a co-production of Centre culturel de Liège – Les Chiroux, Ateliers d’Art contemporain, Fédération des Maisons de Jeunes de Belgique francophone and asbl Façons de Voir.

Artistic direction : Werner Moron.

With the support and the participation of the following publics and institutions :

Les Centres Publics d’Aide Sociale de Beyne-Heusay, de Chaudfontaine, de Ferrières, de Flémalle, de Herstal, de Liège, de Saint-Nicolas, de Seraing et de Theux; le Centre d’Expression et de Créativité de La Hesse; le Centre pour demandeurs d’asile - Croix Rouge de Manhay; les Maisons des Jeunes La Bicoque, Le Prisme, XL’J ainsi que la MJ du Thier à Liège ; la ludothèque de Xhovémont; Ampli Junior (Espace Enfance et Jeunesse de la FMSS/FPS) ; les Ateliers d’Art contemporain; le Centre d’Orientation et de Formation d’Amay; l’asbl d’Aide aux Personnes déplacées; le Centre culturel de Berchem Sainte-Agathe; l’école maternelle de Xhovémont; Peuples et Cultures en Wallonie et à Bruxelles et Présence et Action culturelles.



# [B] Biennial OFF

## Israel ARINO | Espacio Imaginario

- A** Galerie ARS LINEANDI  
Place Coronmeuse 11  
4040 Herstal
- du 16 février au 14 mars 2008  
horaires : du mercredi au samedi  
de 14 à 18h ou sur RDV  
vernissage : le 15 février à 18h  
contacts : 0494/65 83 71

## art-liege.be | Territoires Virtuels

- B** LES CHIROUX,  
C.C. de Liège  
place des Carmes, 8  
4000 Liège
- du 15 février au 15 mars 2008  
horaires : du jeudi au dimanche  
de 14h à 19h  
vernissage : le 20 février dès 18h  
contacts : photo@art-liege.be  
www.art-liege.be/photo2008

## Collectif "Du Grain à Moudre"

- C** Archéoforum de Liège  
Place Saint-Lambert  
B-4000 Liège
- du 27 février au 30 mars 2008  
du mardi au samedi de 10h à 18h  
le dimanche de 11h à 18h  
vernissage : le 28 février  
contacts : dameye@live.be  
tel : 0486/90.43.29

## ESAS | Mouvements d'un quartier, dis-moi d'où tu viens, où tu vas, qui tu rencontres ?

- F** ESAS  
Rue d'Harscamp 60c  
4020 Liège  
Quartier du Longdoz  
exposition dans  
l'espace public
- du 05 mars au 08 avril 2008  
horaires : du lundi au samedi  
de 10h à 20h  
Manifestation de clôture  
le 08 avril à 12h00.  
contacts : m.block@hemes.be /  
francoisbodeux@yahoo.com

## Le maçon et la blanchisseuse

- G** Galerie FLUX  
Rue Paradis, 60  
4000 Liège
- du 16 février au 30 mars 2008  
horaires : du jeudi au samedi  
de 16h à 19h ainsi que sur RDV  
vernissage : le 16 février dès 14h00  
contacts : flux-news@skynet.be  
tel : 04 253.24.65

## Bernhard FUCHS | Autos

- H** Galerie L. HUSTINX  
Place du XX août, 17  
4000 Liège
- du 02 février au 15 mars 2008  
horaires : du mardi au vendredi  
de 11h à 18h  
et le samedi de 13h30 à 18h30.  
vernissage : le 01 février dès 19h à 22h  
contacts : info@hustinx-ac.be

## Cartographies mentales

- I** le Mad  
parc d'Avroy  
4000 Liège
- du 09 février au 5 avril 2008  
horaires : du lundi au vendredi  
de 10h à 17h  
et le samedi de 14h à 17h  
vernissage : le 8 février dès 18h30  
contacts : +32(0)4.222.32.95  
Infos : www.madmusee.be

## Sebastiao SALGADO | Exodes

- J** ASBL " Article 23 "  
Place Emile Dupont, 1  
4000 Liège
- du 16 février au 20 mars 2008  
horaires : Du lun. au ven. de 9h à 14h  
et le samedi de 14h à 17h  
vernissage : le 20 février 2008 dès 18h  
contacts : Valérie JAMAGNE  
Tél. : 04/221.42.10 | 0494/11.10.18  
mail : pac.liege@skynet.be

## Alain JANSSENS | Mur du silence

- K** Librairie PAX  
Place Cockerill  
4000 Liège
- du 17 février au 30 mars 2008  
horaires : Lu de 13h à 18h30,  
Ma au Ve de 9h à 18h30, Sa de 10h  
à 18h30 et Di de 10h30 à 13h30  
vernissage : le 17/02 2008  
de 10h30 à 13h30  
contacts : al.janssens@skynet.be  
librairiepax@skynet.be | 04/2232146

## Peter MAURER | Faceland

- L** Galerie PERISCOPE  
Galerie WEGIMONT  
cinéma Churchill  
r. du Mouton Blanc, 20  
4000 Liège
- du 16 février au 30 mars 2008  
horaires : pendant les heures  
d'ouverture du Cinema Churchill  
contacts : periscope@skynet.be  
Tél : (+32) 4.224 70 50

## Pascal DAMUSEAU & Jean-Luc DERU

- D** Maison Renaissance  
de l'EMULATION  
Rue Ch. Magnette, 9  
4000 Liège
- Du 21 février au 29 mars 2008  
(Pré-ouverture le 16/02, de 14 à 18 h)  
horaires : Du mercredi au samedi  
de 14h à 18h  
vernissage : le 20/03 de 18h à 20h30  
contacts : tel : 04/ 223 60 19  
email : soc.emulation@swing.be

## Rodolphe Finamore et Alexandre Radicchi | Ougrée-Bas : Pile et Face

- E** L'Aquilone  
25, Boulevard Saucy  
4020 Liège
- du 16 février au 30 mars 2008  
horaires : mercredi et jeudi  
de 13h à 17h  
vendredi et samedi de 17h à minuit  
dimanche de 13h à 20h  
vernissage : le 15 février dès 18h.  
contacts : Nicolas Briale  
0496 21 50 46 (Aquilone)

## Ecole Supérieure des Arts St-Luc Section Photographie | Géométrie Variable

- M** Ecole Supérieure  
des Arts Saint-Luc  
Bld de la  
Constitution, 41  
4020 Liège
- du 16 février au 22 mars 2008  
horaires : Du mercredi au samedi  
de 13h à 17h  
vernissage : le 16 février dès 14h00  
contacts : Christine PLENUS /  
christineplenus@skynet.be  
Tel : 0473/ 65.17.35

## Fernand HICK | Ville ou campagne : ces territoires qui nous habitent...

- N** Galerie Espace VENTA  
Rue Hors Château, 90  
4000 Liège
- du 16 février au 30 mars 2008  
horaires : du je. au sa., de 14h à 18h  
et le dimanche de 14h à 17h  
vernissage : le 15/02 de 18h à 20h30  
contacts : Carine DELHAYE  
0494/15.04.43  
infos : www.espaceventa.be

## Qu'en pense la cible ? (allons lui demander)

- O** Centre wallon d'Art  
contemporain  
«La Châtaigneraie»  
19, Ch. de Ramioul  
4400 Flemalle
- du 16 février au 30 mars 2008  
horaires : Du mardi au dimanche  
de 14h à 18h  
sauf jeudi de 16h à 18h  
contacts : +32 (0) 42 75 33 30 -  
chataigneraie@belgaacom.net

## Tatiana BOHM

- P** Galerie Les Drapiers  
Rue Hors Château, 68  
4000 Liège
- du 16 février au 30 mars 2008  
horaires : du mercredi au samedi  
de 14h à 18h et sur rendez-vous.  
dim. 30/03 en présence de l'artiste  
vernissage : le 15 février dès 18h  
contacts : 04/222.37.53 -  
denisebiernaux@lesdrapiers.be

## Dodécaton / 3 regards

- Q** ASBL Le Hangar  
43b, Qual St Leonard  
4000 Liège
- Les 7, 8, 9 et 14, 15, 16 mars 2008  
horaires : samedi de 15h à 19h et le  
dimanche de 10h à 15h.  
vernissages : le 7 mars de 19h à 23h  
et le 14 mars de 19h à 23h.  
contacts : 0472/744680  
www.lehangar.be

## Fabris REMOUCHAMPS / Espaces Clos...

- R** Hush up  
Concept Store  
Chaussée des Prés 30  
4020 Liège
- Du 9 février au 15 mars 2008  
horaires : Du lundi au vendredi de  
11h à 19h et le samedi de 10h à 19h  
contacts : mail@fabris.be  
ludo@hushup.be

## PhotoClub IMAGE de l'ULg | Territoire intellectuel

- S** Hall d'entrée de  
l'Université de Liège  
Place du XX Aout, 7-9  
4000 Liège
- Du 10 au 28 mars 2008  
horaires : Du lundi au vendredi de  
8h à 18h. Fermé le WE  
contacts : josecoulee@skynet.be  
tel : 086/36.76.04

# [C] Acknowledgements :

---

**The Administrative Board of Centre culturel de Liège - Les Chiroux and its President, Pierre STASSART, The City of Liège and its Assessor of Culture, Jean-Pierre HUPKENS, thank:**

## **The staff of the Biennial:**

General Direction : Lucien BAREL  
Artistic Direction : Dorothee LUCZAK  
Curators : Rui PRATA, Werner MORON  
Coordination : Anja BÜCHERL, Anne-Françoise LESUISSE, Marc WENDELSKI.  
Administration : Jean-Pierre HAZEE, Éveline MASSART, Myriam ROBEYNS, with the help of Flore VENNIN.  
Accounting : Catherine JANSSEN  
Graphics and Visual Communication: Jean-François PRZEBIENDA, Marc WENDELSKI, Karin SIMON.  
Technical staff : Jean-François PRZEBIENDA, HADJ, Jean-Marc GOURGUET, Christophe FOURRÉ, Luigi BALDASSI.

The staff of the Biennial wishes to thank the artists for their precious collaboration. The staff is also grateful to Mister Marc Maertens of Collection-Care.

## **The 6th International Biennial of Photography and Visual Arts could not take place without the following personalities and institutions:**

Madame Fadila LAANAN, Minister of Culture of Communauté française.  
Monsieur Paul-Émile MOTTARD, Député permanent for Culture, Province de Liège.  
La Communauté française Wallonie-Bruxelles and in particular la Direction générale de la Culture et de la Communication, les Services des Arts plastiques et des Centres culturels.  
The Commissariat général des Relations internationales.  
Liège-Province-Culture.  
La Région wallonne.  
RTC-Télé Liège  
La Première – Radio RTBF  
Annoncer la Couleur  
The Chairmans Conference of the CPAS (agglomération liégeoise et Verviers), and in particular Monsieur Éric GRAVA, Chariman of CPAS Beyne-Heusay.  
La Fédération des Maisons de Jeunes en Belgique francophone.  
Les Ateliers d'Art contemporain.  
l'asbl Façons de Voir.  
Madame Françoise DUMONT, Curator of Musée d'Art wallon.  
Madame Françoise SAFIN, Curator of Musée d'Art moderne et d'Art contemporain.  
Madame Régine RÉMON, Curator of Cabinet des Estampes.  
Le Centre culturel canadien de Paris and in particular Madame Catherine BEDARD.  
Madame Marie-Madeleine DETHIER, Attachée culturelle of the Embassy of Canada.  
Madame Agnès BENSIMON, Attachée culturelle of the Embassy of Israël.  
The Embassy of Portugal.  
Les Offices du Tourisme de la Province de Liège and of the Ville de Liège (Echevinat du Tourisme).  
Pro Helvetia.  
Prométhéa asbl  
Monsieur Rui PRATA et le Museu da Imagem de Braga.  
La Braverman Gallery, Tel Aviv.  
Monsieur Roger SZMULEWICZ und die galerie Fifty One Fine Art Photography, Anvers.  
WOHNMASCHINE, Berlin.  
L'Agence VU, Paris.  
La Galerie LE RÉVERBÈRE, Lyon.  
Madame Delphine CHARON et LABEL EXPOSITIONS.  
Le Musée des Beaux-Arts de Nantes.  
Folkwangmuseum, Essen.  
FOAM\_Fotografiemuseum, Amsterdam.  
Territoires de Fictions, Paris.  
Agence Oeil Public, Paris.  
Galerie Stefan Röpke, Cologne.

**CAPTIONS:**

**Cover :** Anouk KRUIHOF, no title, from the series «we are the blue people», 2007

**Pg 1**

EDWARD BURTYNSKY, Bao Steel #8, Shanghai, China, 2005, 76,2 x 152,4 cm, Edition 9on9, Courtesy of Galerie Stefan Röpke, Cologne.

**pg 3**

PATRICK MESSINA, from the series «Ma petite Amérique», Courtesy of Label Expositions, Paris

NICOLAS BOMAL, no title, from the series Espace Belgique, 2000-2007 (c-print 50x60cm)

JOEL TETTAMANTI, from the series Maloting, Lesotho, 2004 (c-print 125x160cm)

**Pg 5**

ANOUK KRUIHOF, no title, from the series « We are the blue people », 2007

MARRIE BOT, Liesbeth (76) and Cor (70), from the series « Timeless Love » , 2001, c-print 136x115cm / aluminium

**Pg 6**

YANN MINGARD & ALBAN KAKULYA, N 55° 05' 33 3'' - E 21° 53' 49 6'', from the series «East of Eden», 2001-2002 (c-print 100x100cm)

JEROME BREZILLON, from the series «Souverains, Indiens des plaines», courtesy of Label Expositions, Paris.tif (c-print, 50x60cm)